

Getting Started with Winlink Global Email

1. Introduction and Computer Sound Settings

2. This modular series of PDFs provides a **very** basic approach to Winlink Global Email.
 - a. The **Purpose** is to encourage hams to add Winlink Express to their communications tool box.
 - b. This series assumes operators know how to use a Windows computer and their own radio.
 - c. It is also assumed that hams are naturally curious and are encouraged to explore beyond the specific recipes provided by this series.
 - d. As operators gain experience with Winlink Express, more advanced features can be added to their knowledge base.
 - e. The equipment for basic Winlink Express modes is the same as for NBEMS.
 - i. If you are doing NBEMS, you have what you need for Winlink Express

3. Winlink Express and NBEMS
 - a. Winlink and NBEMS are complementary tools in the communications tool box.
 - b. Asking which one is better is like asking are screwdrivers better than pliers. The choice is situational.
 - c. Winlink Express and FLdigi can
 - i. be open on the computer simultaneously,
 - ii. share a soundcard, and
 - iii. operate on the same frequency.

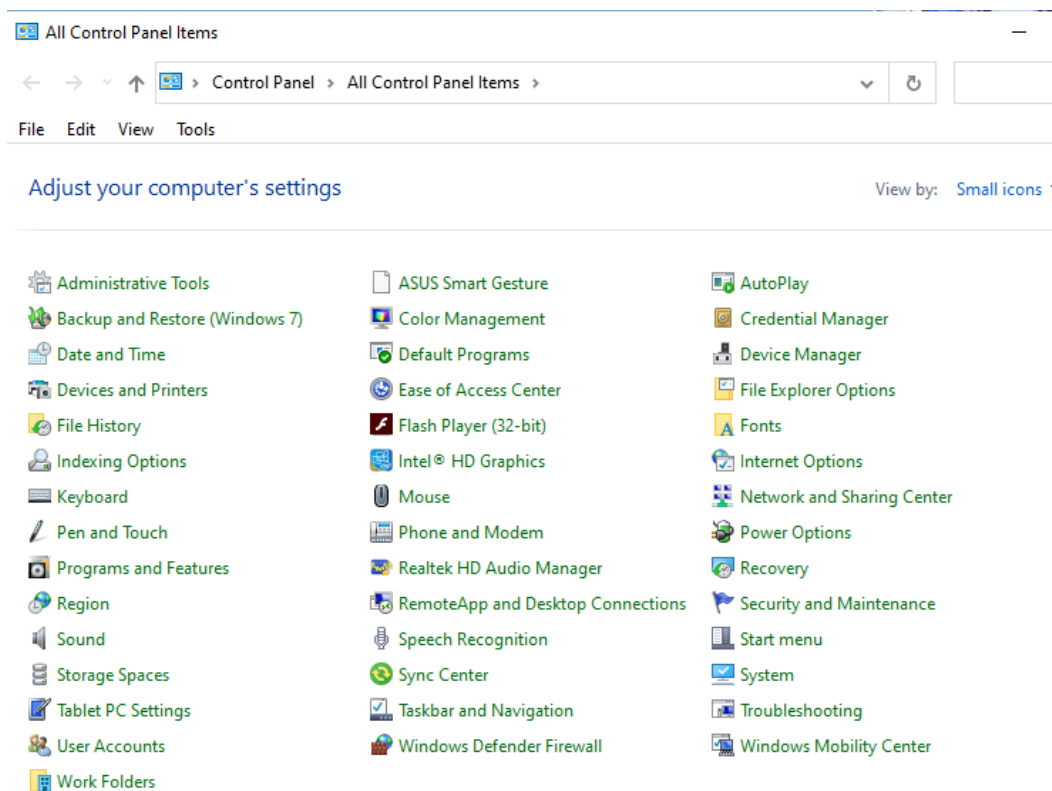
4. Winlink Express offers multiple modes to address various communication requirements and operating conditions as shown in the following table.

Mode	Internet Only	VHF / UHF	HF	Sound Card	TNC	Pactor Modem	Internet + Radio	Radio Only Relay	Peer-to-Peer	Digital Repeater	VHF/UHF Repeater
Telnet	X								In Same Subnet		
Packet		X		X	X		X		X	X	X
VARA FM		X		X			X		X		Possibly
ARDOP			X	X			X		X		
VARA HF			X	X			X	X	X		
Pactor			X			X	X	X	X		

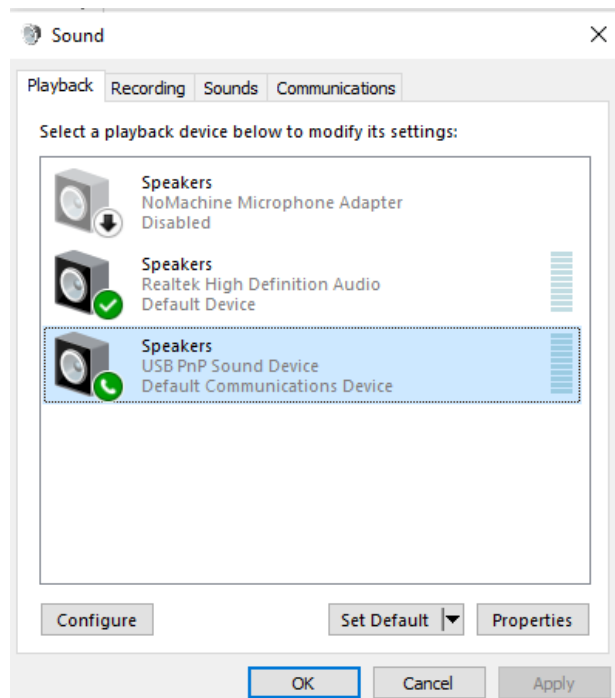
5. Winlink Express Work Flow is similar for all Winlink radio modes:
 - a. Prepare a message
 - b. Select Message Type
 - c. Post message to Outbox
 - d. Select a Session Type
 - e. Open Session
 - f. Open Channel Selection
 - g. Update Channel Selection
 - h. Double-click on desired Channel to select it
 - i. Click Start in the Session window to connect to Radio Message Server or Peer-to-Peer station

6. Winlink Express depends heavily on Windows sound settings to work properly.
 - a. Different Windows versions may have slightly different Sound Control Panel appearances but the basics are the same for each.
 - b. Windows 10 Sound Control Panel is illustrated here.

7. Open the Windows Control Panel

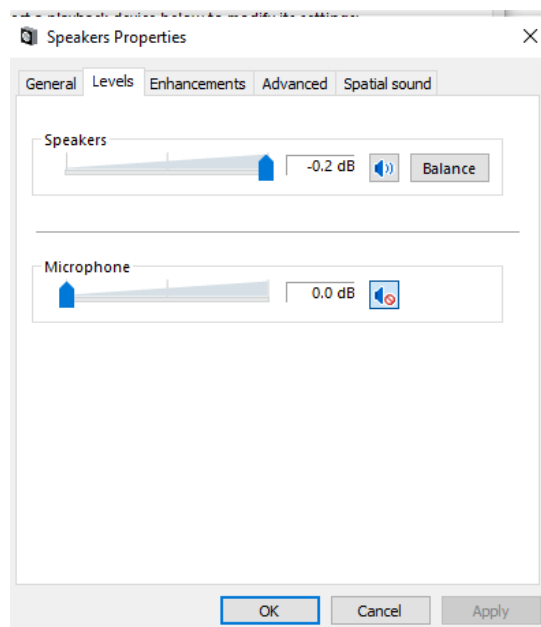


- a. Click on **Sound** → **Playback**



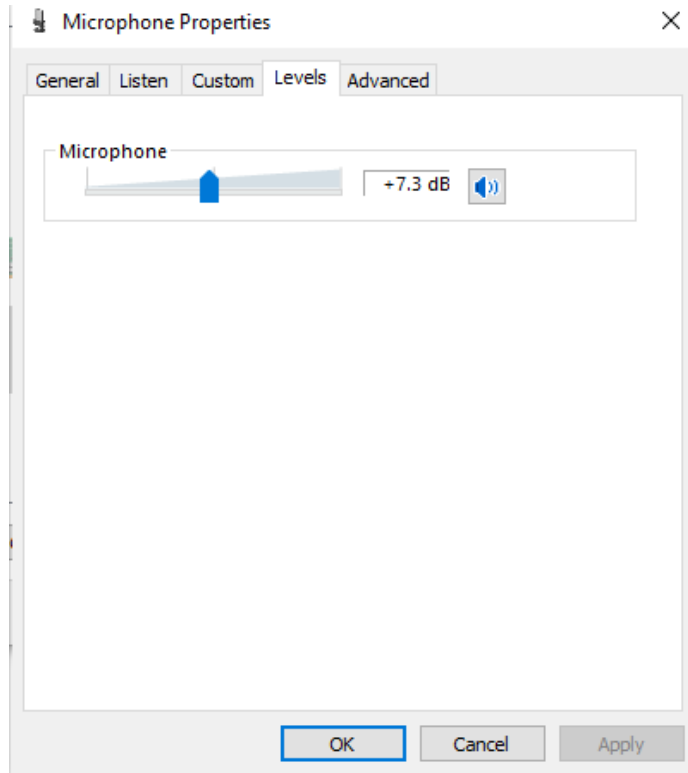
- i. Select the computer internal Speakers as the **Default Device**.
- ii. Select your **SoundCard** as the **Default Communications Device**.

b. Click on your **SoundCard** → **Levels**. Set the slider all the way to the right.



c. Click OK.

- d. Click on Recording.
 - i. Select the internal Microphone as the **Default Device**.
 - ii. Select the **Soundcard** as the **Default Communications Device**.
- e. Click on your **SoundCard** → **Levels**.
- f. Set the slider about mid-way



- g. Click OK and close the Sound Control Panel.
8. These basic settings are a starting point for all Winlink SoundCard modes.
- a. Make adjustments as experience dictates.