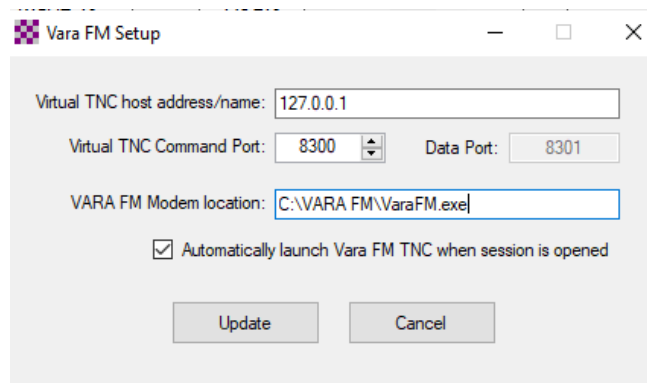


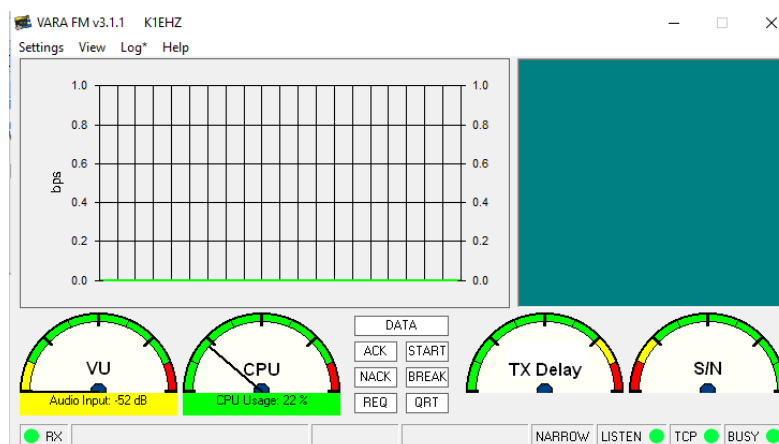
Getting Started with Winlink Global Email

5. VARA FM with SignalLink

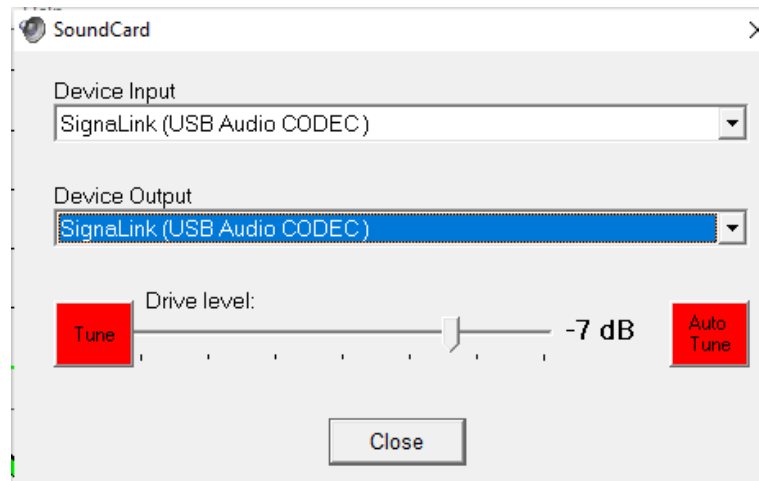
1. Download and install VARA FM <https://rosmodem.wordpress.com/>
 - a. VARA FM has a free version and a paid version (\$70).
 - b. The free version is twice as fast as packet. The paid version is much faster.
 - c. One VARA registration number is valid for all VARA products, including VARA HF.
 - d. Also download the VARA FM guides available on the web page for future reference.
2. Configure Winlink Express
 - a. Open a VARA FM Winlink session in Winlink Express.
 - b. Click Settings in the session screen and confirm VARA FM setup.
 - c. If the VARA FM Modem location is not correct, correct it.



3. Configure VARA FM
 - a. When the VARA FM Winlink session window is open, the VARA FM icon should appear in the tray at the bottom of your screen.
 - b. Click on the icon to open VARA FM.



- c. Click on Settings and Soundcard to select your Signalink.

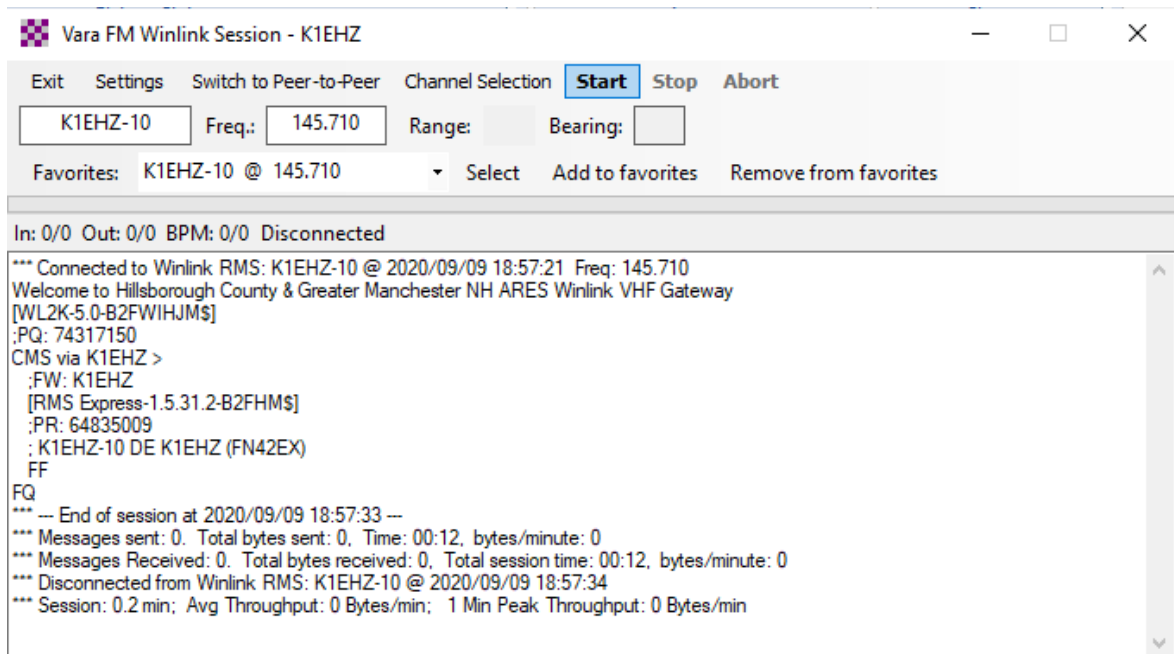


- d. Set the transmit audio gain slider to about -5 to -8dB.
 - e. Click the tune button to be sure the Signalink keys the radio.
 - f. If the radio has ALC, move the slider until the ALC is a third to a half of full ALC scale.
4. Connect to an RMS Packet Gateway
 - a. Choose VARA FM Winlink in the Open Session pull-down menu.
 - b. Click Open Session.
 - c. In the **Session window** click on **Channel Selection -> Update Table via Internet**.

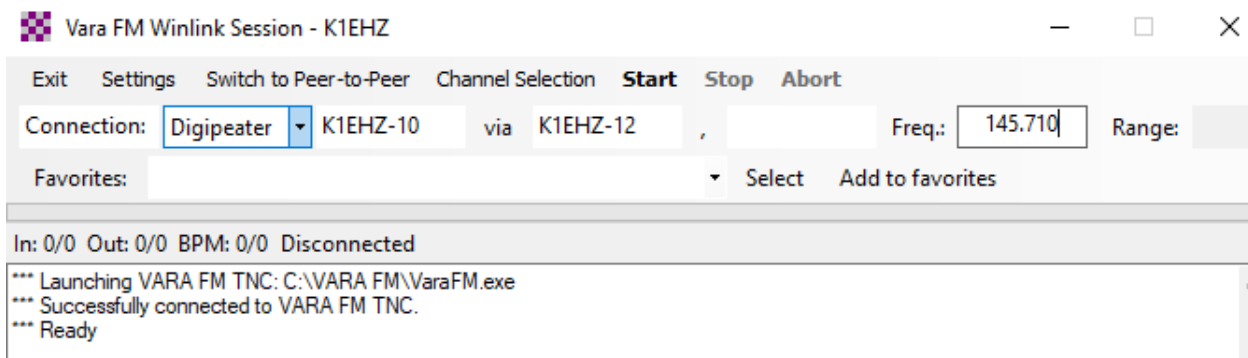
Stations found within 100 miles of your grid square.						
Callsign	Frequency (MHz)	Baud	Grid Square	Group	Distance (mi)	Bearing (Degrees)
K1EHZ-10	145.710	1200	FN42EX	PUBLIC	000	000
K1EHZ-12	145.710	1200	FN42EX	PUBLIC	000	000
KF1D-10	145.090	9600	FN42FA	PUBLIC	066	176

- d. Double click on the gateway station to which you want to connect.
- e. VARA FM may work through regular FM repeaters with permission of repeater owners,
- f. In the **Session window**, confirm the **Settings** previously entered..

5. Click **Start** to send messages in the Outbox and to receive any messages for you on the Common Message Servers.



6. To use an intermediate digipeater, select **Digipeater** in the Connection type pull down menu.



7. The choices to enter in the **Via** box are
 - a. **ELLIOT** in Manchester (cw id KA1IJN)
 - b. **K1EHZ-12** in Bow (cw id KA1SU)
 - c. **NASHUA** in Nashua (cw id K9AEN)
8. Basic configuration should not change after initial setup.
 - a. The exception is the selection of the sound card (SignalLink) in VARA FM which should be checked each time Winlink Express is booted up.