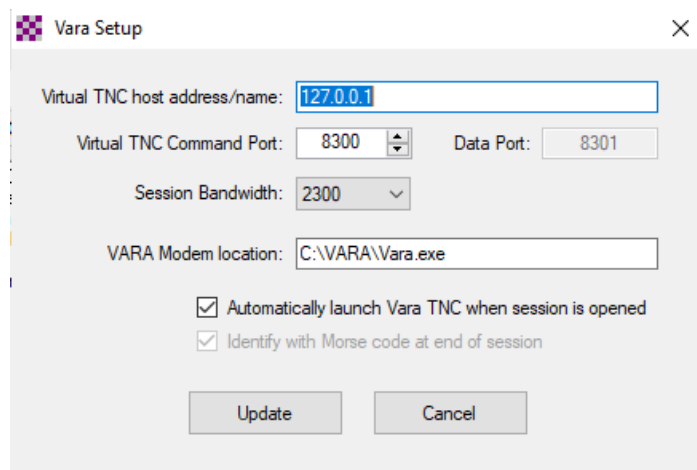


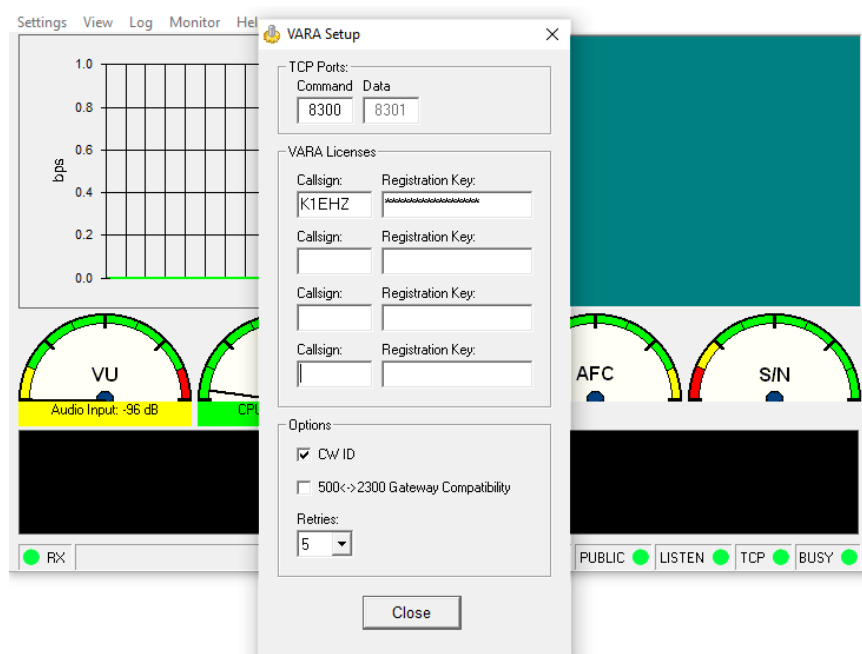
Getting Started with Winlink Global Email

10. VARA HF Peer-to-Peer

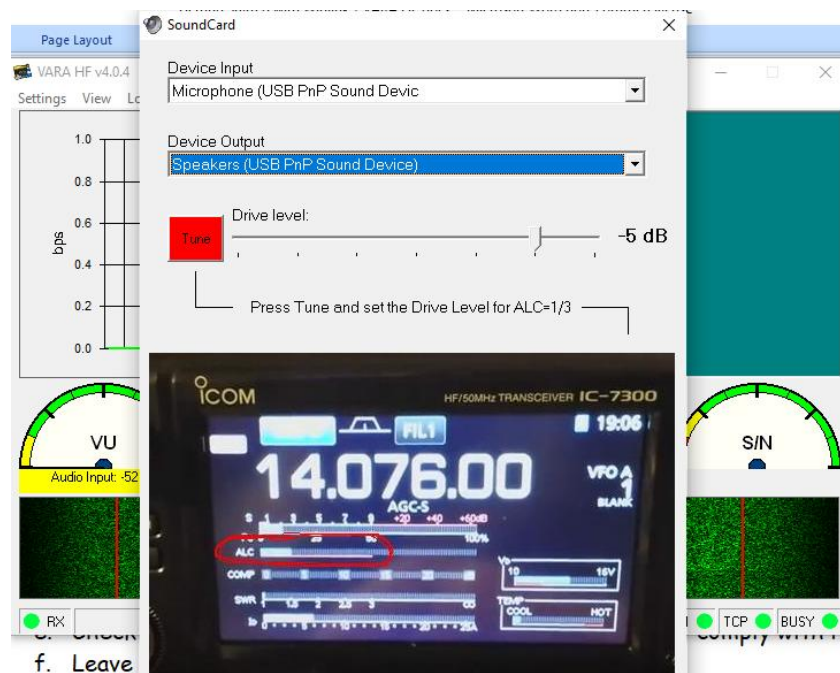
1. Download and install VARA HF <https://rosmodem.wordpress.com/>
 - a. VARA HF has a free version and a paid version (\$70).
 - b. The paid version is much faster than ARDOP.
 - c. One VARA registration number is valid for all VARA products, including VARA FM.
 - d. Also download the VARA guides available on the web page for future reference.
2. Configure Winlink Express
 - a. Open a **VARA P2P** session in Winlink Express.
 - b. Click **Settings** in the session screen and confirm VARA setup.
 - c. If the default **VARA Modem location** is not correct, correct it.



3. Configure VARA HF
 - a. When the **VARA P2P** session window is open, the **VARA HF icon** should appear in the tray at the bottom of your screen.
 - b. Click on the icon to open **VARA HF → Settings → VARA Setup**.
 - c. Fill in your **Callsign** and **Registration Key** if you purchased one.
 - d. If you don't have a Registration Key, VARA will still work at reduced speed.
 - e. Check **CW ID** to send your call at the end of a session to comply with Part 97.
 - f. Leave **Gateway Compatibility** unchecked.
 - g. Select **5 Retries** initially. Increase later if 5 is generally insufficient to establish a connection with an RMS gateway.

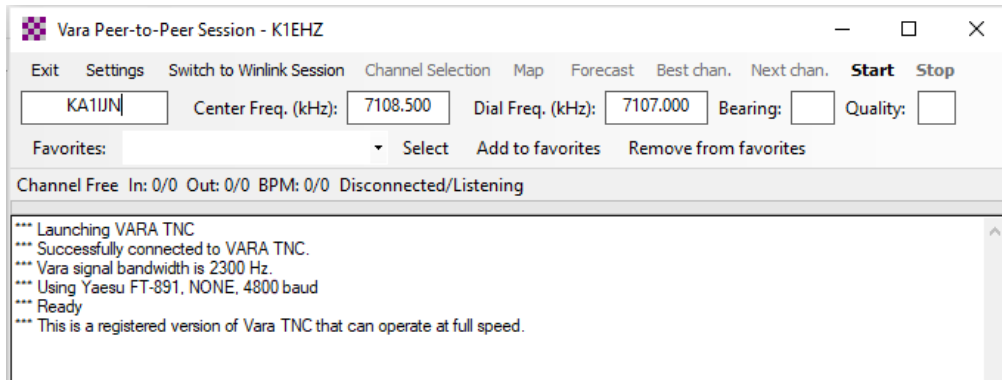


h. Click on **Settings** → **Soundcard** to select your SoundCard..



- i. Set the transmit audio gain slider to about **-5 to -8dB**.
- j. Click the **Tune** button to be sure the soundcard keys the radio.
- k. If the radio doesn't key, check connections and move slider further right until the radio keys.
- l. If the radio has ALC, move the slider until the ALC is a third to a half of full ALC scale.

4. In the VARA P2P Session window click **Start** to connect to the designated P2P station, to send P2P messages in the Outbox and to receive any messages for you on the other P2P station.



5. Basic configuration should not change after initial setup.
 - a. The exception is the selection of the soundcard (SignalLink) in VARA HF which should be checked each time Winlink Express is booted up.