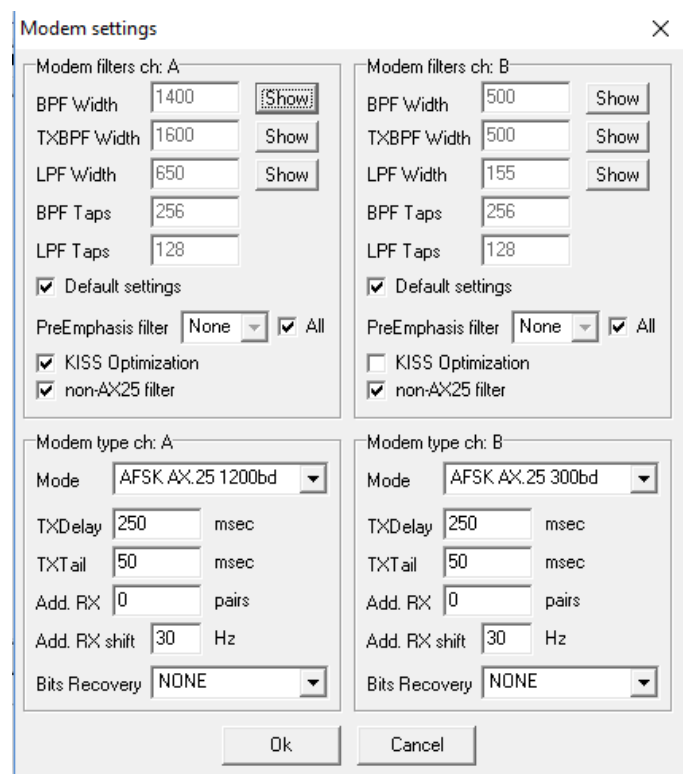
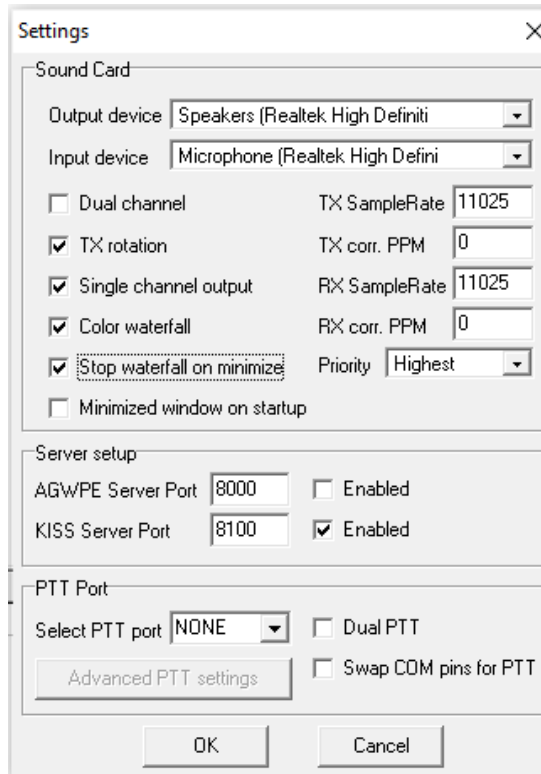


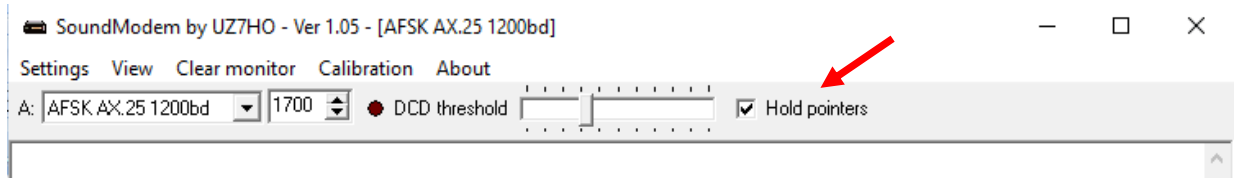
# Getting Started with Winlink Global Email

## 3. VHF Packet with Signalink & SoundModem

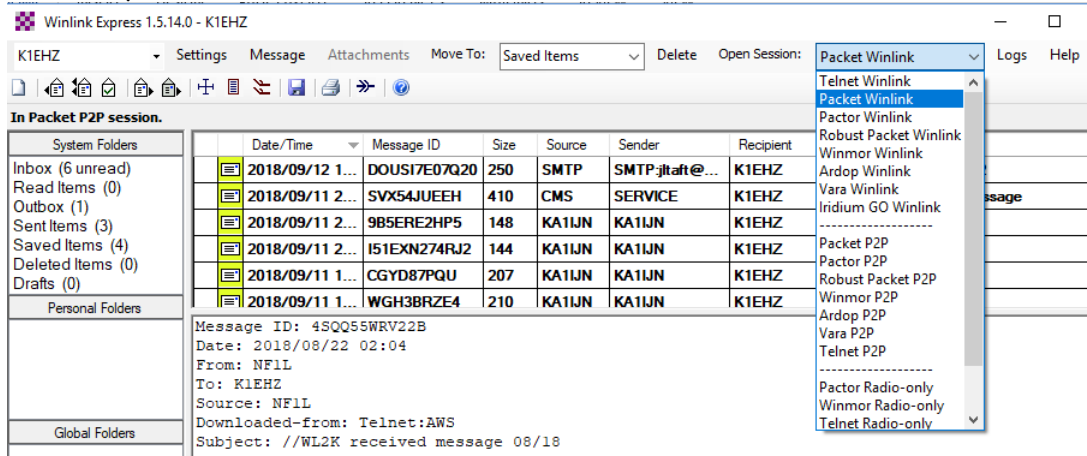
1. Download **SoundModem** <http://uz7.ho.ua/packetradio.htm>
  - a. Scroll down to **soundmodem105.zip** (or latest SoundModem version).
  - b. After downloading, place SoundModem in its own folder on the C drive.
2. Configure SoundModem
  - a. Open **Settings** -> **Devices** and configure as shown below left.
  - b. To use a Signalink select **USB Audio Codec** for Output device and Input device.
  - c. Make sure **KISS Server Port** is **Enabled**.
  - d. Go to **Settings** -> **Modems** and configure Modem settings window as shown below right.
  - e.



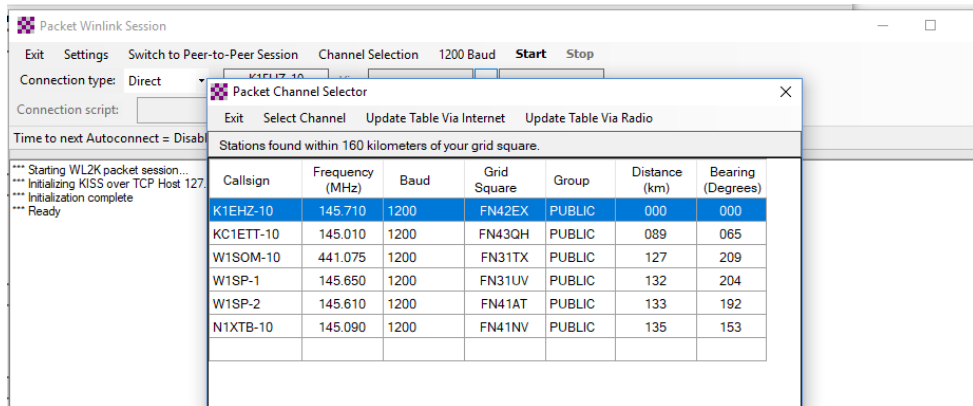
3. Be sure the main SoundModem screen appears as below and that **Hold pointers** is checked.



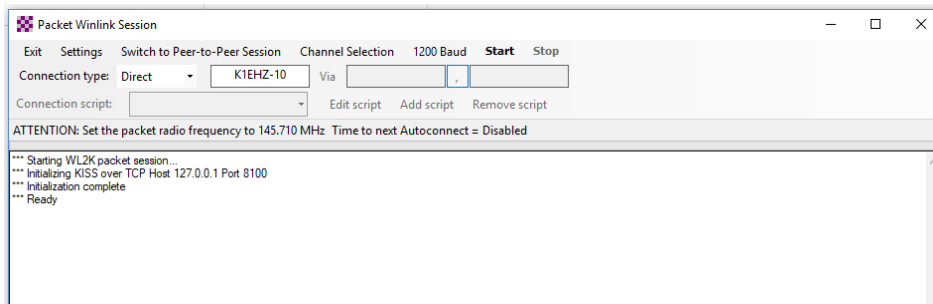
4. Connect to an RMS Packet Gateway
  - a. Choose **Packet Winlink** in the **Open Session** pull-down menu.
  - b. Click **Open Session**



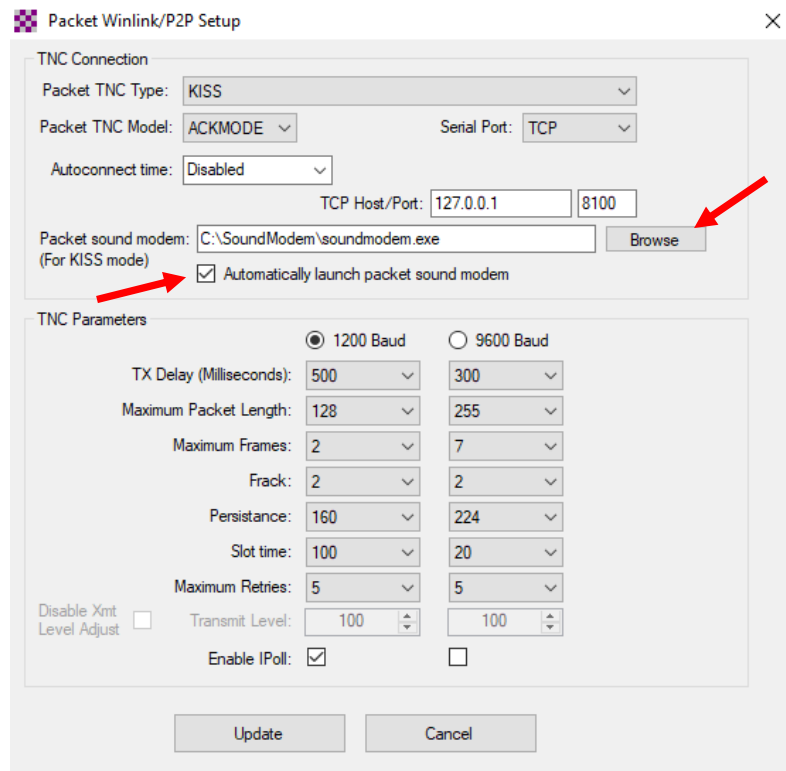
- c. In the **Session window** click on **Channel Selection** -> **Update Table via Internet**.



- d. Double click on the gateway station to which you want to connect.

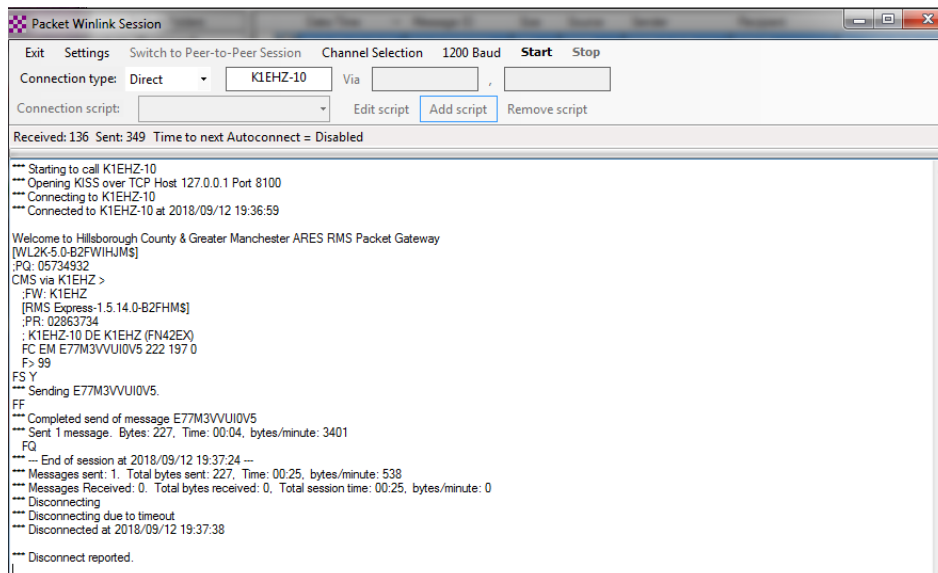


- e. In the **Session window**, choose **Settings** and configure as shown below.
  - f. Browse to the folder where you placed **SoundModem** and check **Automatically launch packet sound modem**.



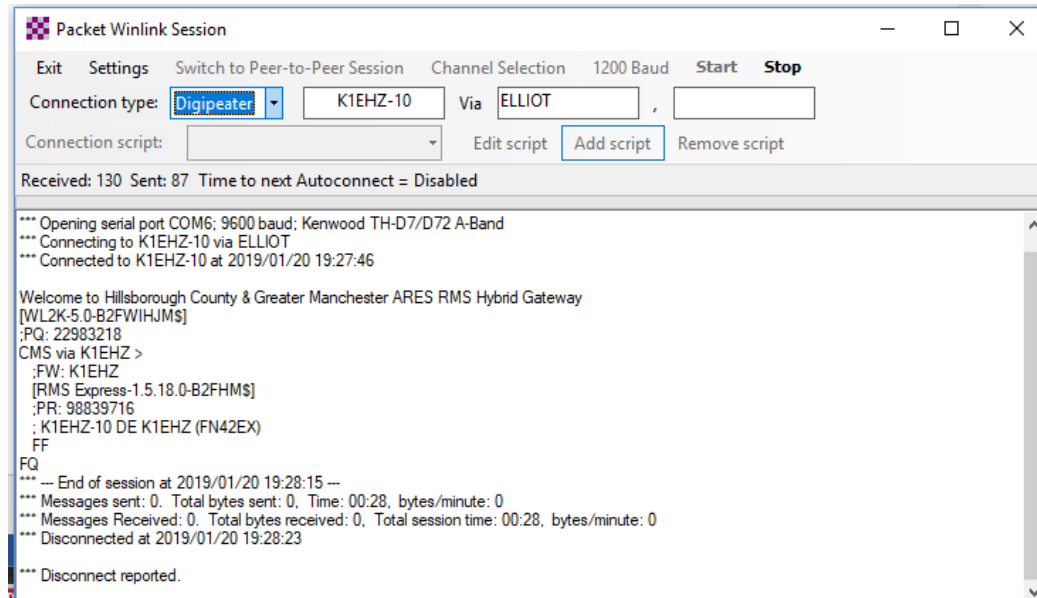
g. Click **Update**.

5. Click **Start** to send messages in the Outbox and to receive any messages for you on the Common Message Servers.



6. To use an intermediate digipeater, select **Digipeater** in the Connection type pull down menu.

7. The choices to enter in the **Via** box are
  - a. **ELLIOT** in Manchester (cw id KA1IJN)
  - b. **K1EHZ-12** in Bow (cw id KA1SU)
  - c. **NASHUA** in Nashua (cw id K9AEN)



8. Basic configuration should not change after initial setup.
  - a. The exception is the selection of the sound card (SignalLink) in SoundModem which should be checked each time Winlink Express is booted up.
  - b. Winlink advises about updates automatically. Updates should be accepted.
  - c. SoundModem does not update automatically, but it doesn't change very often. Check for updates manually now and then.