

Getting Started with Winlink Global Email

4. VHF Packet Peer-to-Peer

1. Configure Winlink Express with SoundModem and SignalLink as in Module 3.
2. Prepare a P2P message.
 - a. Open blank message screen and write a message.
 - b. Before posting it to the outbox, be sure to select **Peer-to-Peer Message** in the **Send as** pull-down menu.

Enter a new message

Close Select Template Attachments Post to Outbox Spell Check Save in Drafts

From: K1EHZ Send as: Winlink Message Request message receipt

To: KA1IJN;

Cc:

Subject: P2P Test Message

Attach:

P2P test

- c. It is efficient for NCS or other coordinating stations to post P2P messages for recipient stations to pick up.
 - d. If the message is intended for multiple addressees, all addressee call signs can be written in the **To** window of a single message. When posted to the outbox, Winlink will provide a separate message for each addressee.
3. Send a P2P message.
 - a. Select Packet P2P from the Open Session pull-down menu.

Open Session: Packet P2P

Vara HF Winlink

Vara FM Winlink

Iridium GO Winlink

Packet P2P

Pactor P2P

Robust Packet P2P

Winmor P2P

Ardop P2P

Vara P2P

Vara FM P2P

Telnet P2P

Pactor Radio-only

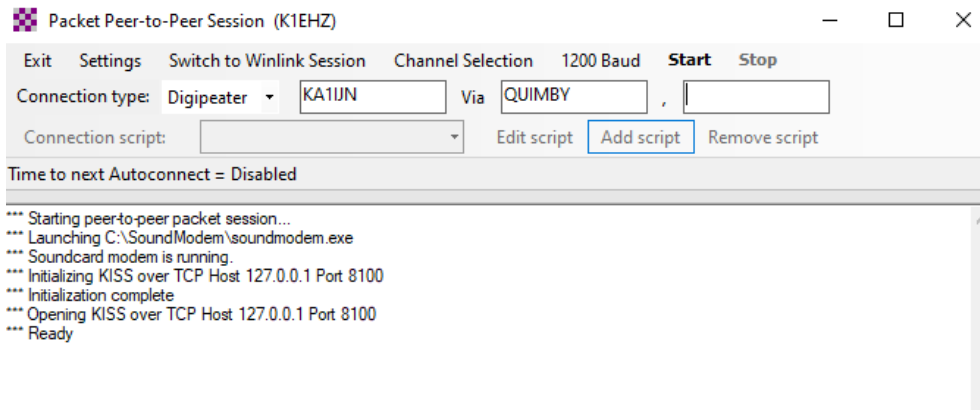
Winmor Radio-only

Vara Radio-only

Telnet Radio-only

Telnet Post Office

- b. Click Open Session.



- c. In the **Session window** fill in the call sign of the addressee.
 - i. You may send the message to the addressee.
 - ii. Leave the call sign box blank if you expect the addressee(s) connect to your station to pick up message(s).
 - iii. Packet P2P messages may be sent through a digipeater like regular Packet Winlink messages.
4. Click **Start** to connect to the station to send the message, or leave the session open if you expect the other station(s) to connect to your station pick up message(s).