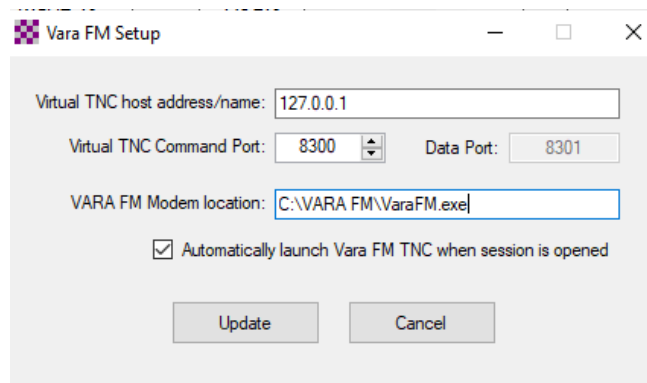


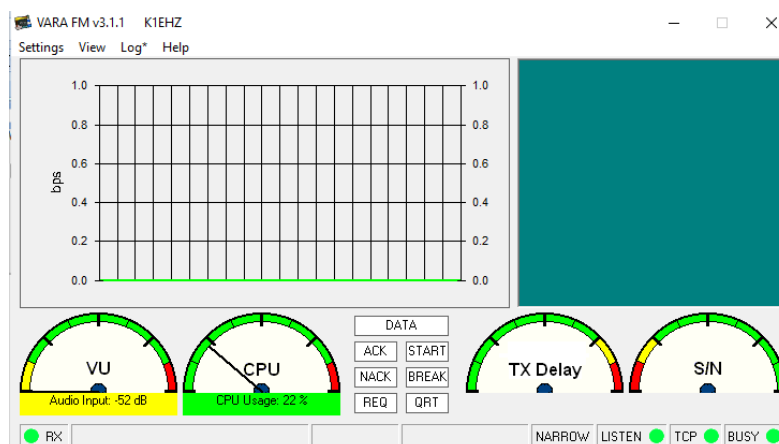
Getting Started with Winlink Global Email

6. VARA FM Peer-to-Peer

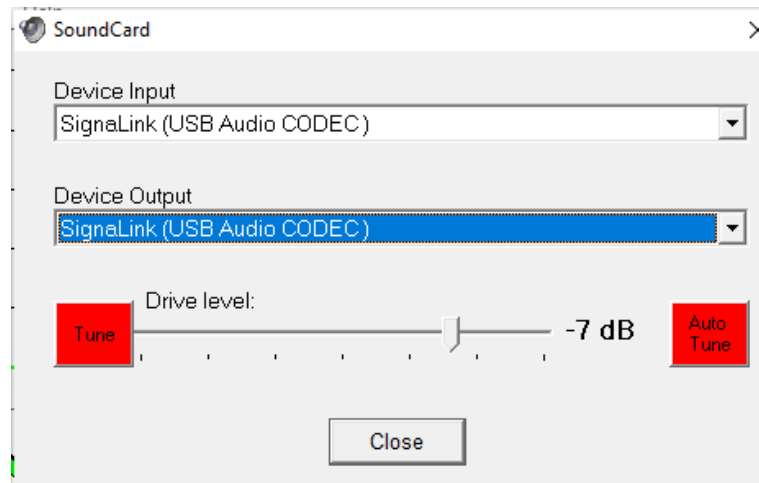
1. Download and install VARA FM <https://rosmodem.wordpress.com/>
 - a. VARA FM has a free version and a paid version (\$70).
 - b. The free version is twice as fast as packet. The paid version is much faster.
 - c. One VARA registration number is valid for all VARA products, including VARA HF.
 - d. Also download the VARA FM guides available on the web page for future reference.
2. Configure Winlink Express
 - a. Open a VARA FM P2P session in Winlink Express.
 - b. Click Settings in the session screen and confirm VARA FM setup.
 - c. If the VARA FM Modem location is not correct, correct it.



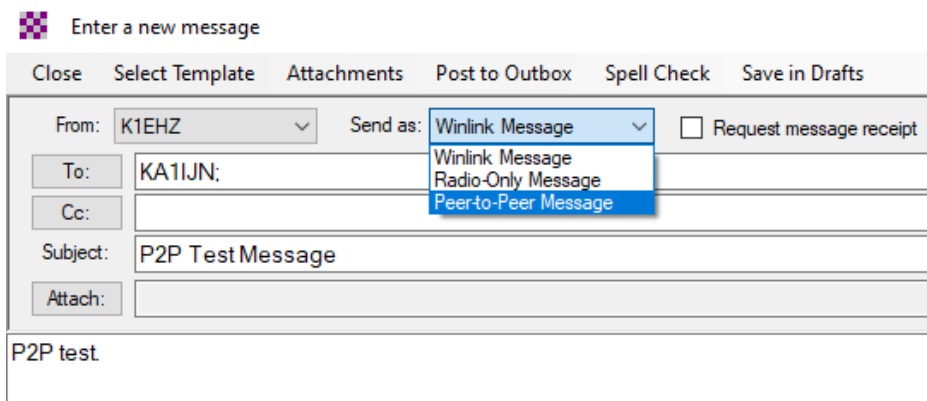
3. Configure VARA FM
 - a. When the VARA FM Winlink session window is open, the VARA FM icon should appear in the tray at the bottom of your screen.
 - b. Click on the icon to open VARA FM.



- c. Click on Settings and Soundcard to select your SignalLink.

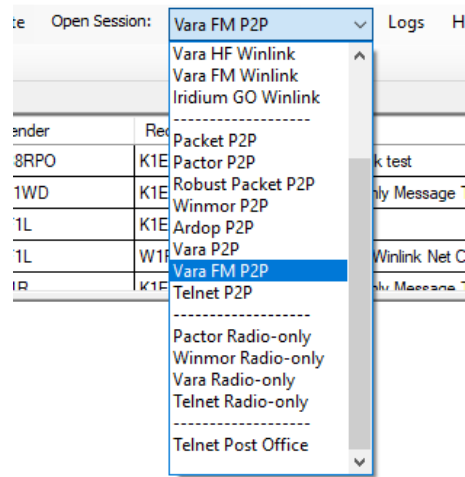


- d. Set the transmit audio gain slider to about -5 to -8dB.
 - e. Click the **Tune** button to be sure the SignalLink keys the radio.
 - f. If the radio has ALC, adjust the slider until the ALC is a third to a half of full ALC scale.
4. Prepare a P2P message.
 - a. Open blank message screen and write a message.
 - b. Before posting it to the outbox, be sure to select **Peer-to-Peer Message** in the **Send as** pull-down menu.

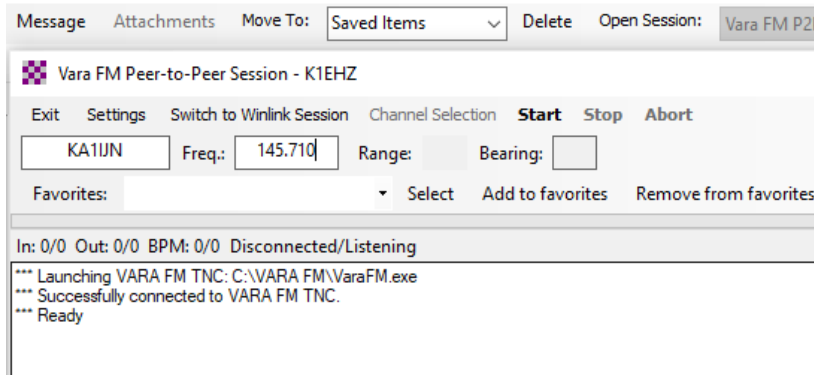


- c. It is efficient for NCS or other coordinating stations to post P2P messages for recipient stations to pick up.
- d. If the message is intended for multiple addressees, all addressee call signs can be written in the **To** window of a single message. When posted to the outbox, Winlink will provide a separate message for each addressee to pick up.

5. Send a P2P message.
 - a. Select VARA FM P2P from the Open Session pull-down menu.



- b. Click Open Session.



- c. In the **Session window** fill in the call sign of the addressee.
 - i. You may send the message to the addressee.
 - ii. Leave the call sign box blank if you expect the addressee(s) connect to your station to pick up message(s).
6. Click **Start** to connect to the station to send the message, or leave the session open if you expect the other station(s) to connect to pick up message(s).