

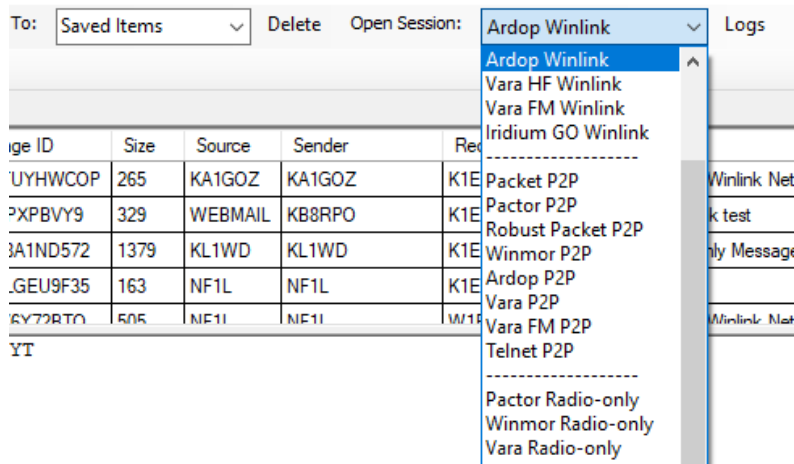
# Getting Started with Winlink Global Email

## 7. HF Winlink with ARDOP & Soundcard

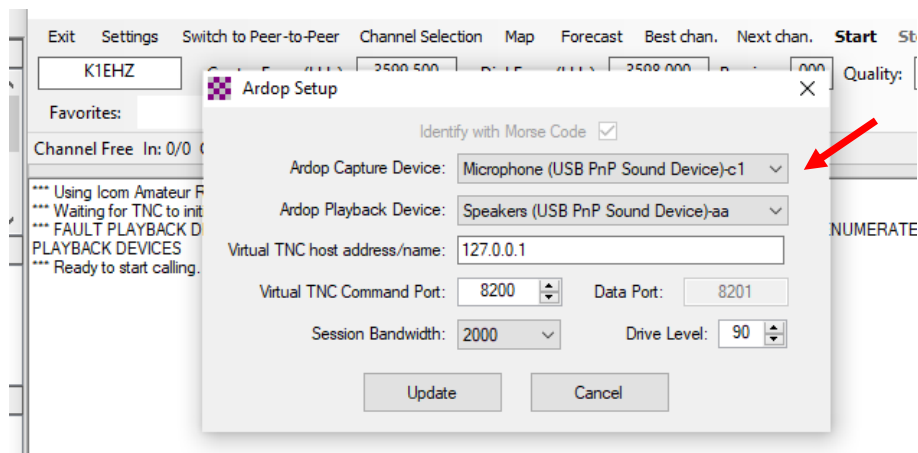
1. ARDOP mode is included with Winlink Express. No other programs are required.

2. Configure ARDOP

a. Select **ARDOP Winlink** in the **Session** drop down menu.



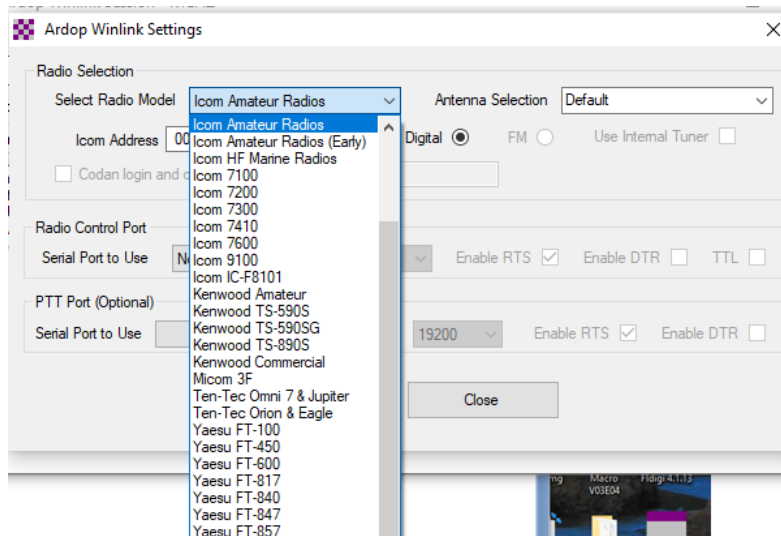
b. Under **Settings** select **ARDOP Setup** and select your sound card in the capture and playback drop down menus.



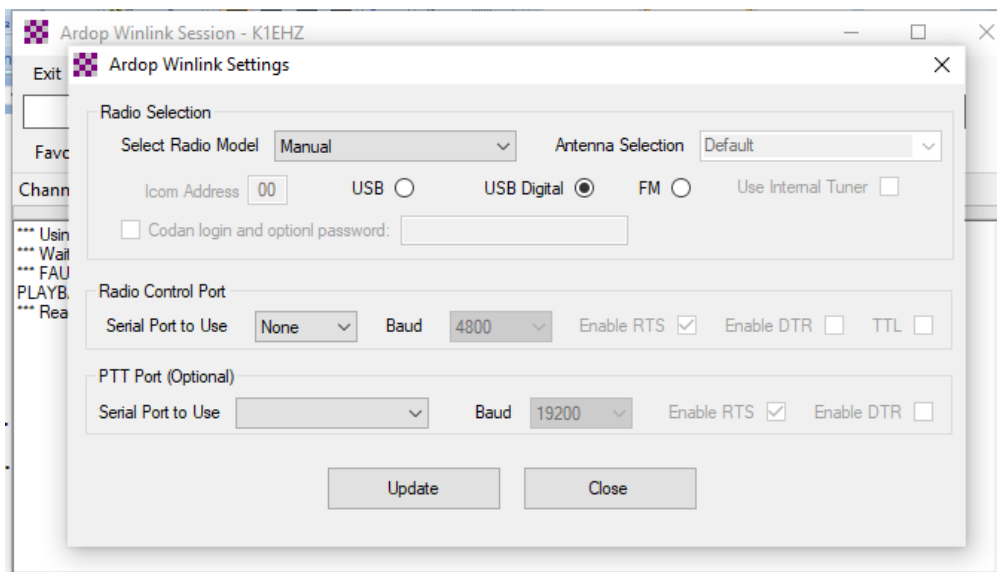
c. Default settings for other parameters should be ok

d. In the **Settings** drop down menu select **Radio Setup** and chose your radio from the list.

e. If your radio is not listed, select **Manual** and set radio parameters manually.



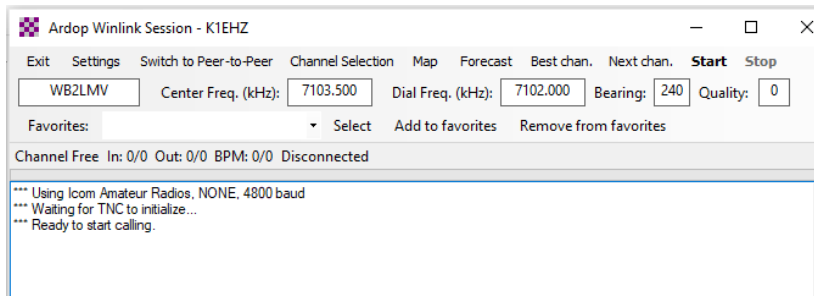
- f. Select the **Radio Control Port**, if your radio supports computer control.
- g. Select the **PTT Port**, which may be **External** with your soundcard.



3. Connect to an RMS ARDOP Gateway
  - a. Choose **ARDOP Winlink** in the **Open Session** pull-down menu.
  - b. Click **Open Session**
  - c. In the **Session window** click on **Channel Selection** -> **Update Table via Internet**.

Call sign	Frequency (kHz)	Mode	Grid Square	Hours	Group	Distance (mi)	Bearing (Degrees)	Path Reliability Estimate	Path Quality Estimate
K1EHZ	3596.500	2000	FN42EX	23-11	PUBLIC	0	000	99	99
W1EO	1845.000	500	FN42IM	00-23	PUBLIC	36	151	100	100
W1EO	3597.900	2000	FN42IM	00-23	PUBLIC	36	151	99	99
W1EO	14104.200	2000	FN42IM	00-23	PUBLIC	36	151	0	10
W1EO	7102.500	2000	FN42IM	00-23	PUBLIC	36	151	96	96
W1EO	10144.500	2000	FN42IM	00-23	PUBLIC	36	151	0	8
KC1LI	7101.200	2000	FN43QG	00-23	PUBLIC	54	068	0	4
KC1ETT	3585.500	2000	FN43QH	00-23	PUBLIC	55	065	75	53
KF1D	10148.000	2000	FN42FA	00-23	PUBLIC	66	176	0	5
KF1D	7101.300	2000	FN42FA	00-23	PUBLIC	66	176	0	3
WD1O	3589.500	2000	FN53IX	00-23	PUBLIC	136	059	77	54
WD1O	14106.700	2000	FN53IX	00-23	PUBLIC	136	059	0	0
WD1O	7104.500	2000	FN53IX	00-23	PUBLIC	136	059	1	0
WB2LMV	7103.500	2000	FN21TS	00-23	PUBLIC	163	240	0	0
KP3FT-10	7103.000	500	FN22HM	00-23	PUBLIC	193	262	1	0
KB3PCY	14109.000	2000	FM29EV	10-23	PUBLIC	296	226	0	0
KB3PCY	3593.500	2000	FM29EV	00-23	PUBLIC	296	226	81	54

- d. Double click on the gateway station to which you want to connect. This populates the Session window.



- e. Click **Start** to connect to the gateway station to send messages in the Outbox and to receive any messages for you on the Common Message Server.
4. Basic configuration should not change after initial setup.
- The exception is the selection of the sound card (SignalLink) in ARDOP Setup which should be checked each time Winlink Express is booted up.
  - Winlink advises about updates automatically. Updates should be accepted.