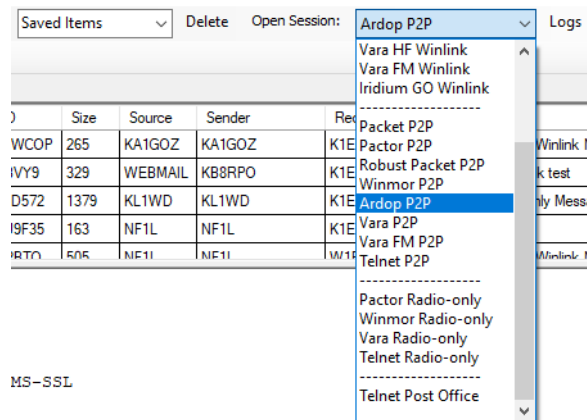


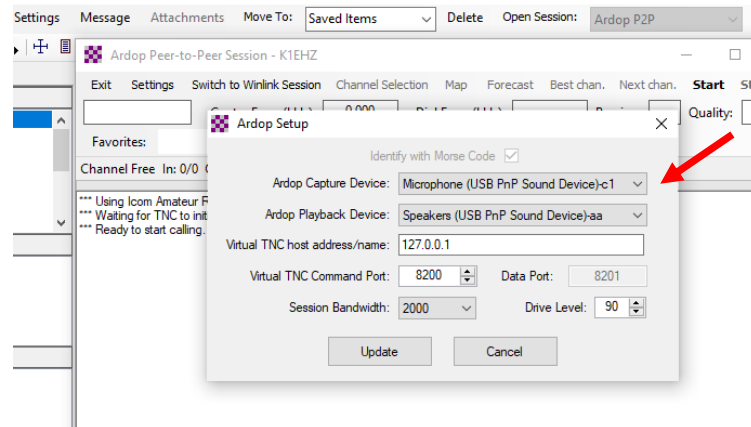
# Getting Started with Winlink Global Email

## 8. HF Winlink with ARDOP Peer-to-Peer

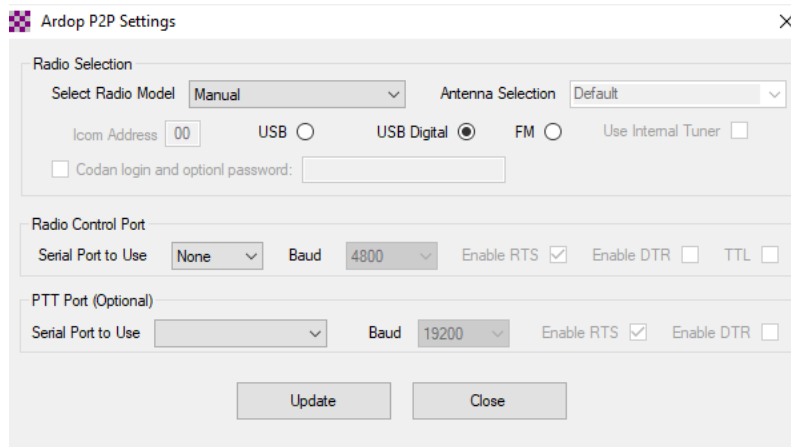
1. ARDOP mode is included with Winlink Express. No other programs are required.
2. Configure ARDOP P2P
  - a. Select **ARDOP P2P** in the **Session** drop down menu.



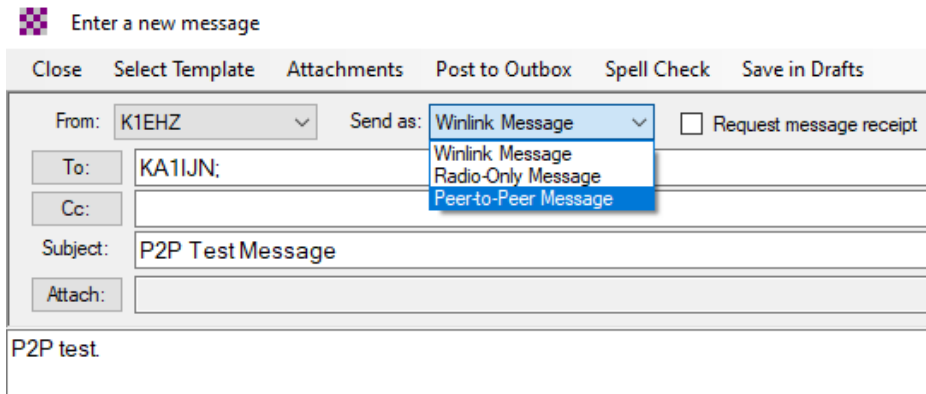
- b. Under **Settings** select **ARDOP Setup** and select your sound card in the capture and playback drop down menus.



- c. Default settings for other parameters should be ok
    - d. In the **Settings** drop down menu select **Radio Setup** and chose your radio from the list.
    - e. If your radio is not listed, select **Manual** and set radio parameters manually.



- f. Select the **Radio Control Port**, if your radio supports computer control.
  - g. Select the **PTT Port**, which may be **External** with your soundcard.
3. Prepare a P2P message.
- a. Open blank message screen and write a message.
  - b. Before posting it to the outbox, be sure to select **Peer-to-Peer Message** in the **Send as** pull-down menu.



4. Send a P2P message
- a. Connect to the designated station on a frequency agreed upon in advance to send and receive messages with that station,
  - b. It is efficient for NCS or other coordinating stations to post P2P messages for recipient stations to pick up.
  - a. If the message is intended for multiple addressees, all addressee call signs can be written in the **To** window of a single message. When posted to the outbox, Winlink will provide a separate message for each addressee to pick up.
5. Basic configuration should not change after initial setup.
- a. The exception is the selection of the sound card (SignalLink) in ARDOP Setup which should be checked each time Winlink Express is booted up.
  - b. Winlink advises about updates automatically. Updates should be accepted.