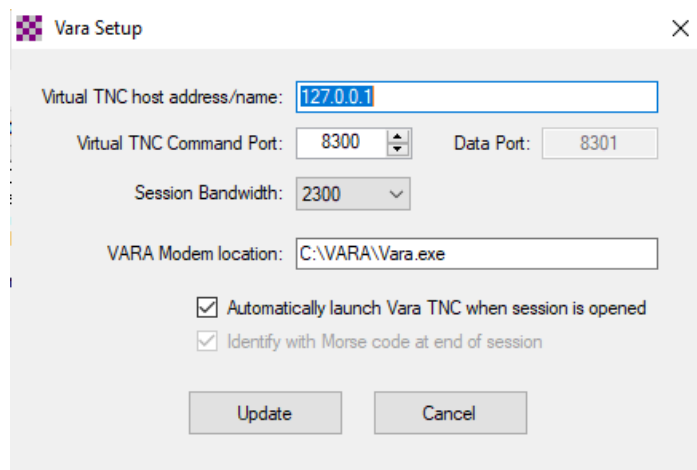


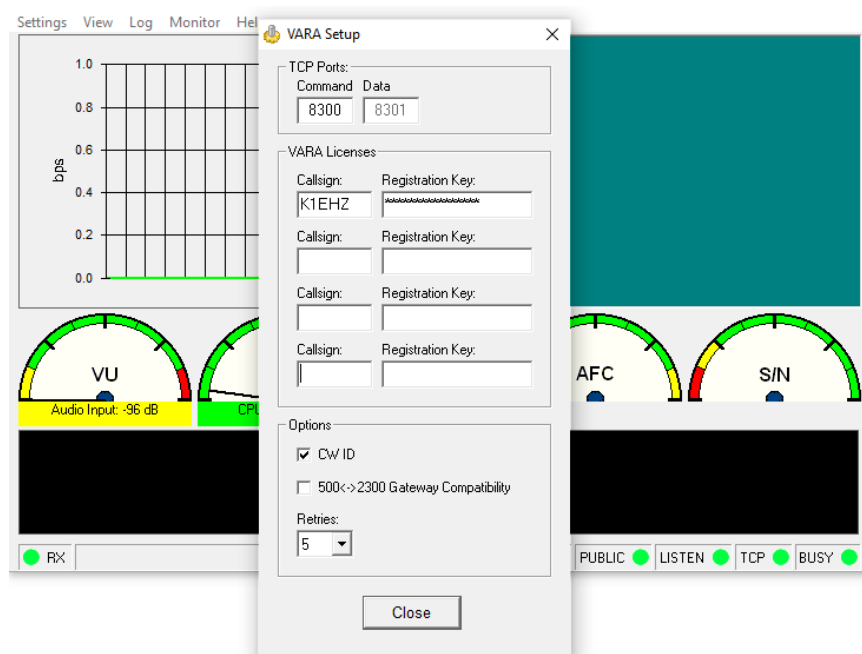
# Getting Started with Winlink Global Email

## 9. VARA HF with Soundcard

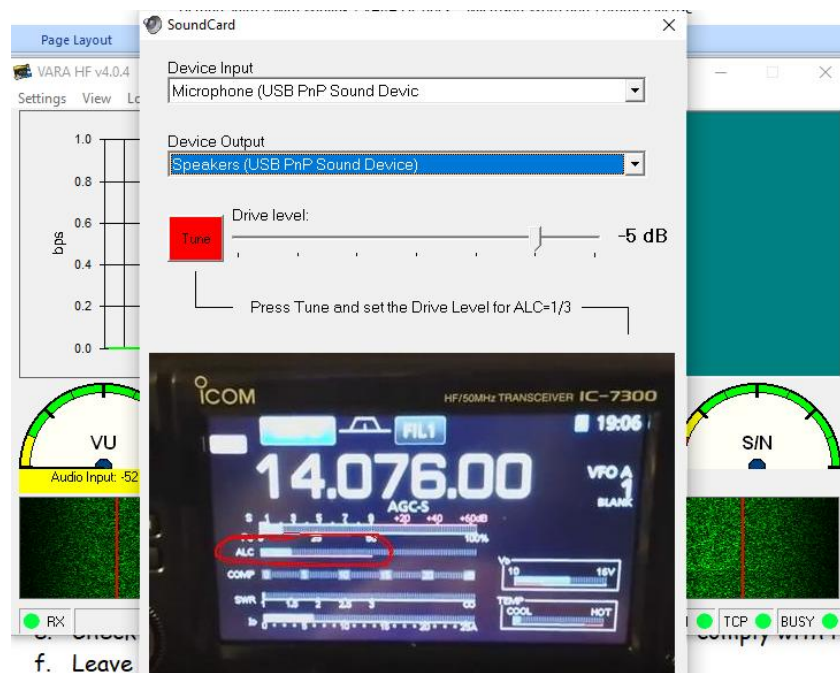
1. Download and install VARA HF <https://rosmodem.wordpress.com/>
  - a. VARA HF has a free version and a paid version (\$70).
  - b. The paid version is much faster than ARDOP.
  - c. One VARA registration number is valid for all VARA products, including VARA FM.
  - d. Also download the VARA guides available on the web page for future reference.
2. Configure Winlink Express
  - a. Open a **VARA HF Winlink** session in Winlink Express.
  - b. Click **Settings** in the session screen and confirm VARA HF setup.
  - c. If the default **VARA Modem location** is not correct, correct it.



3. Configure VARA HF
  - a. When the **VARA HF Winlink** session window is open, the **VARA HF icon** should appear in the tray at the bottom of your screen.
  - b. Click on the icon to open **VARA HF → Settings → VARA Setup**.
  - c. Fill in your **Callsign** and **Registration Key** if you purchased one.
  - d. If you don't have a Registration Key, VARA will still work at reduced speed.
  - e. Check **CW ID** to send your call at the end of a session to comply with Part 97.
  - f. Leave **Gateway Compatibility** unchecked.
  - g. Select **5 Retries** initially. Increase later if 5 is generally insufficient to establish a connection with an RMS gateway.



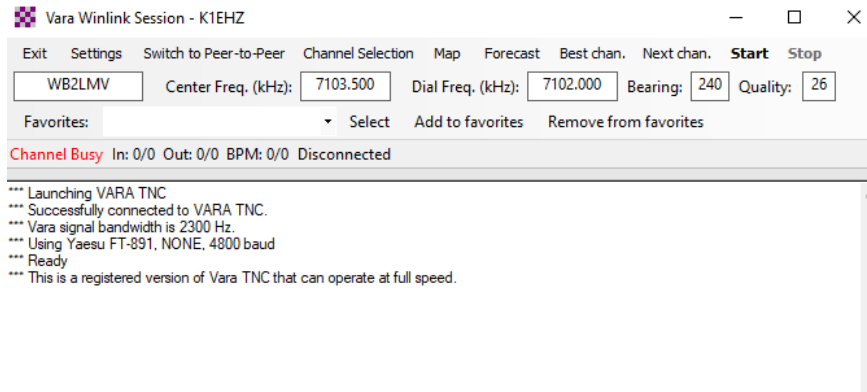
h. Click on **Settings** → **Soundcard** to select your SoundCard..



- i. Set the transmit audio gain slider to about **-5 to -8dB**.
- j. Click the **Tune** button to be sure the soundcard keys the radio.
- k. If the radio doesn't key, check connections and move slider further right until the radio keys.
- l. If the radio has ALC, move the slider until the ALC is a third to a half of full ALC scale.

Call sign	Frequency (kHz)	Mode	Grid Square	Hours	Group	Distance (mi)	Bearing (Degrees)	Path Reliability Estimate	Path Quality Estimate
K1EHZ	7103.800	V2300	FN42EX	12-22	PUBLIC	0	000	96	96
W1EO	1845.000	V500	FN42IM	00-23	PUBLIC	36	151	100	100
W1EO	3597.900	V2300	FN42IM	00-23	PUBLIC	36	151	99	99
W1EO	14104.200	V2300	FN42IM	00-23	PUBLIC	36	151	0	9
W1EO	10144.500	V2300	FN42IM	00-23	PUBLIC	36	151	0	7
W1EO	7102.500	V2300	FN42IM	00-23	PUBLIC	36	151	96	96
KC1LII	7101.200	V2300	FN43QG	00-23	PUBLIC	54	068	20	24
KC1ETT	3585.500	V2300	FN43QH	00-23	PUBLIC	55	065	85	56
KF1D	7101.300	V2300	FN42FA	00-23	PUBLIC	66	176	21	25
KF1D	10148.000	V2300	FN42FA	00-23	PUBLIC	66	176	0	4
WD1O	14106.700	V2300	FN53IX	00-23	PUBLIC	136	059	0	0
WD1O	7104.500	V2300	FN53IX	00-23	PUBLIC	136	059	22	26
WD1O	3589.500	V2300	FN53IX	00-23	PUBLIC	136	059	84	55
WB2LMV	7103.500	V2300	FN21TS	00-23	PUBLIC	163	240	23	26
W2GSA	7090.500	V500	FN20WG	00-23	PUBLIC	227	215	34	33
KB3PCY	3593.500	V2300	FM29EV	00-23	PUBLIC	296	226	87	55

4. Connect to an RMS Gateway
  - a. Choose **VARA HF Winlink** in the Open Session pull-down menu.
  - b. Click Open Session.
  - c. In the **Session window** click on **Channel Selection -> Update Table via Internet**.
  - d. Double click on the gateway station to which you want to connect.
  
5. Click **Start** to send messages in the Outbox and to receive any messages for you on the Common Message Servers.



6. Basic configuration should not change after initial setup.
  - a. The exception is the selection of the soundcard (SignalLink) in VARA HF which should be checked each time Winlink Express is booted up.