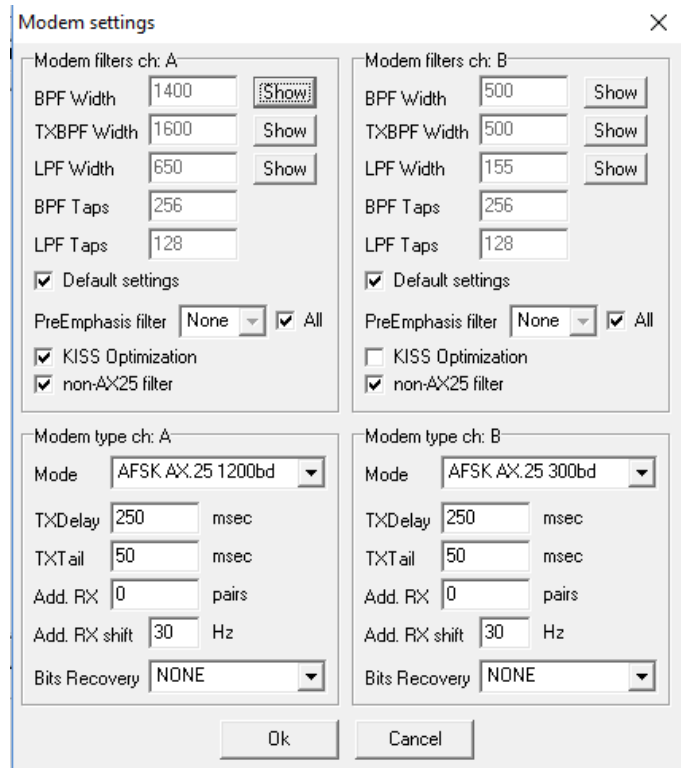
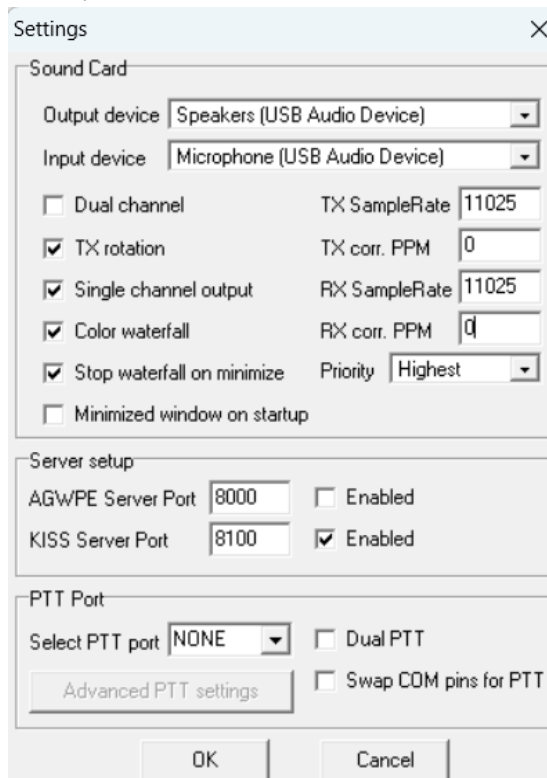


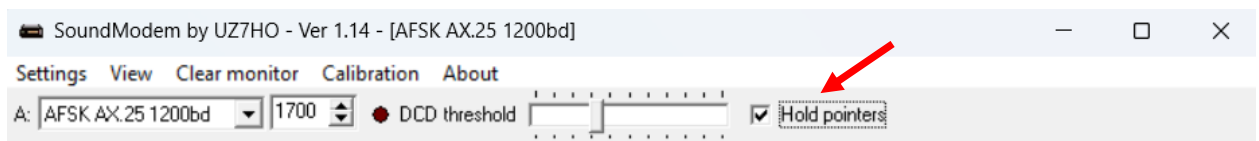
Getting Started with Winlink Global Email

3. VHF Packet with SoundModem Software TNC

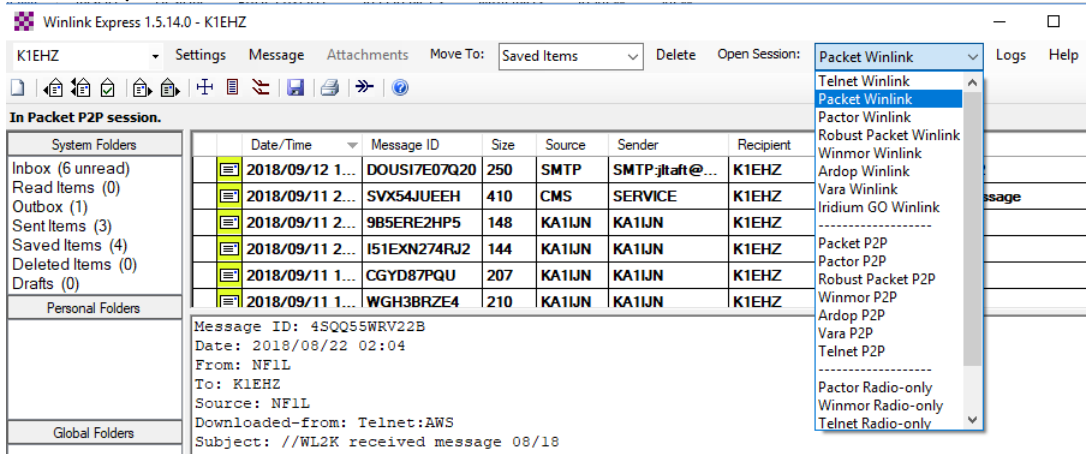
1. Download **SoundModem** <http://uz7.ho.ua/packetradio.htm>
 - a. Scroll down to **soundmodem114.zip** (or latest SoundModem version).
 - b. After downloading, place SoundModem in its own folder on the C drive.
2. Configure SoundModem
 - a. Open **Settings** -> **Devices** and configure as shown below left.
 - b. Select your USB sound card for Output device and Input device.
 - c. Make sure **KISS Server Port** is **Enabled**.
 - d. Go to **Settings** -> **Modems** and configure Modem settings window as shown below right.
 - e.



3. Be sure the main SoundModem screen appears as below and that **Hold pointers** is checked.



4. Connect to an RMS Packet Gateway
 - a. Choose **Packet Winlink** in the **Open Session** pull-down menu.
 - b. Click **Open Session**



- c. In the **Session window** click on **Channel Selection** -> **Update Table via Internet**.

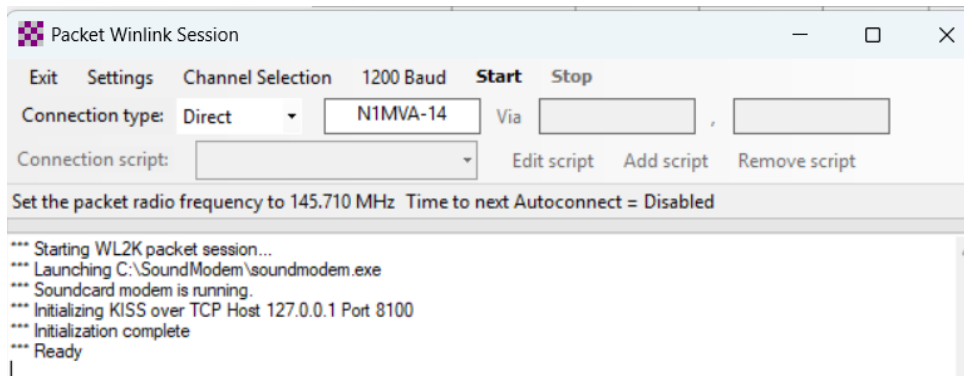
Packet Channel Selector

Select Channel Update Table Via Internet Update Table Via Radio Exit

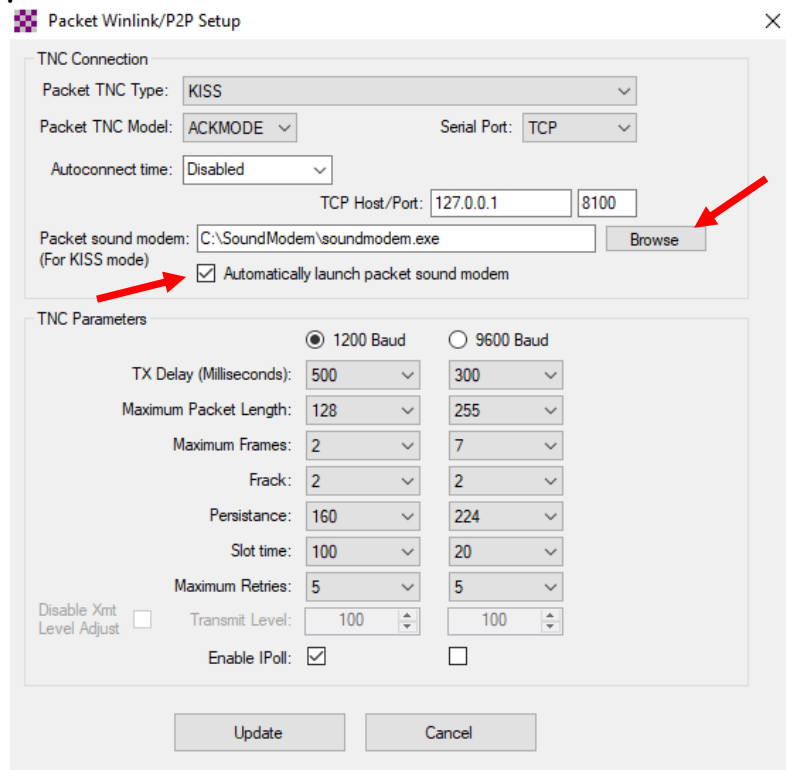
Stations found within 185 miles of your grid square.

Callsign	Frequency (MHz)	Baud	Grid Square	Group	Distance (mi)	Bearing (Degrees)
N1MVA-14	145.710	1200	FN42GX	PUBLIC	005	056
KW1U-10	145.090	1200	FN42HK	PUBLIC	036	166
N1ABC-10	145.090	1200	FN42FI	PUBLIC	040	180
W1CPR-11	145.090	1200	FN42LL	PUBLIC	041	141
W1CPR-10	145.010	1200	FN43HN	PUBLIC	044	011
AA1LO-10	145.730	1200	FN43QH	PUBLIC	053	060
AB1PH-10	145.090	1200	FN42JD	PUBLIC	057	163
W1SHS-10	145.090	1200	FN42HC	PUBLIC	058	172
KF1D-10	145.090	1200	FN42FA	PUBLIC	063	180

- d. Double click on the gateway station to which you want to connect.

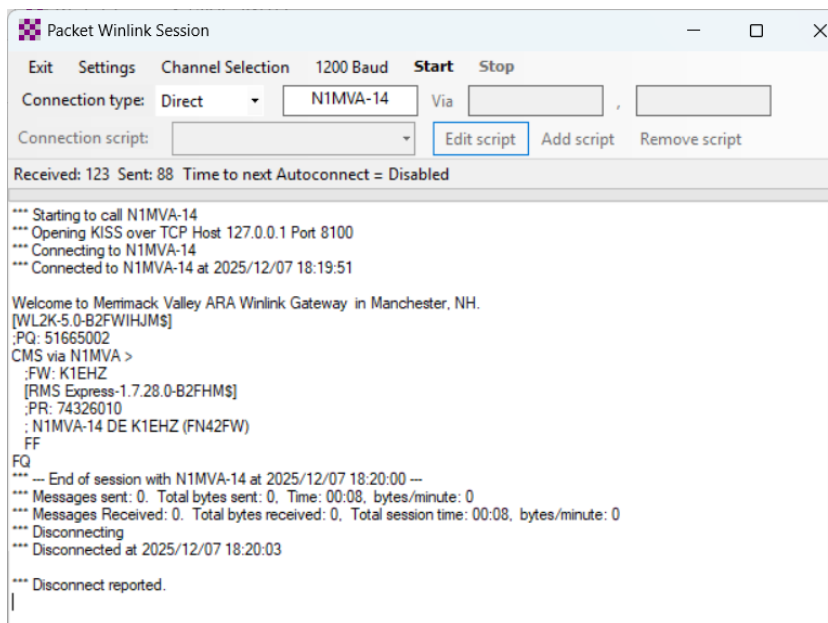


- e. In the **Session window**, choose **Settings** and configure as shown below.
- f. Browse to the folder where you placed **SoundModem** and check **Automatically launch packet sound modem**.

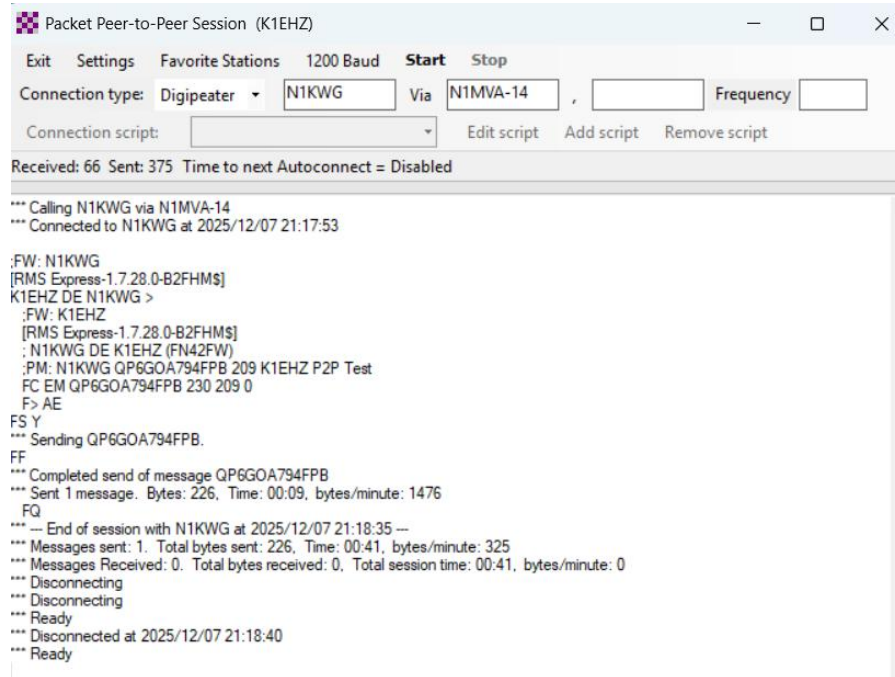


- g. Click **Update**.

5. Click **Start** to send messages in the Outbox and to receive any messages for you on the CMS.



6. To use an intermediate digipeater, select **Digipeater** in the Connection type pull down menu.
 - a. Example below shows a Packet P2P connection between K1EHZ in Bedford and N1KWG in Auburn through the N1MVA-14 digipeater in Manchester.
 - b. See Module 4 for packet Peer-to-Peer details.



7. Basic configuration should not change after initial setup.
 - a. The exception is the selection of the sound card in SoundModem which should be checked each time Winlink Express is booted up.
 - b. Winlink advises about updates automatically. Updates should be accepted.
 - c. SoundModem does not update automatically, but it doesn't change very often. Check for updates manually now and then.