

Getting Started with Winlink Global Email

4. VHF Packet Peer-to-Peer

1. Configure Winlink Express with SoundModem and sound card as in Module 3.
2. Prepare a P2P message.
 - a. Open blank message screen and write a message.
 - b. Before posting it to the outbox, be sure to select **Peer-to-Peer Message** in the **Send as** pull-down menu.
 - c. Not selecting Peer-to-Peer Message is the most common error in P2P messaging.

Enter a new message

Close Select Template Attachments Post to Outbox Spell Check Save in Drafts

From: K1EHZ Send as: Winlink Message Request message receipt

To: KA1IJN; Winlink Message
Radio-Only Message
Peer-to-Peer Message

Cc:

Subject: P2P Test Message

Attach:

P2P test

- d. It is efficient for NCS or other coordinating stations to post P2P messages for recipient stations to pick up.
 - e. If the message is intended for multiple addressees, all addressee call signs can be written in the **To** window of a single message. When posted to the outbox, Winlink will provide a separate message for each addressee.
3. Send a P2P message.
 - a. Select Packet P2P from the Open Session pull-down menu.

Open Session: Packet P2P

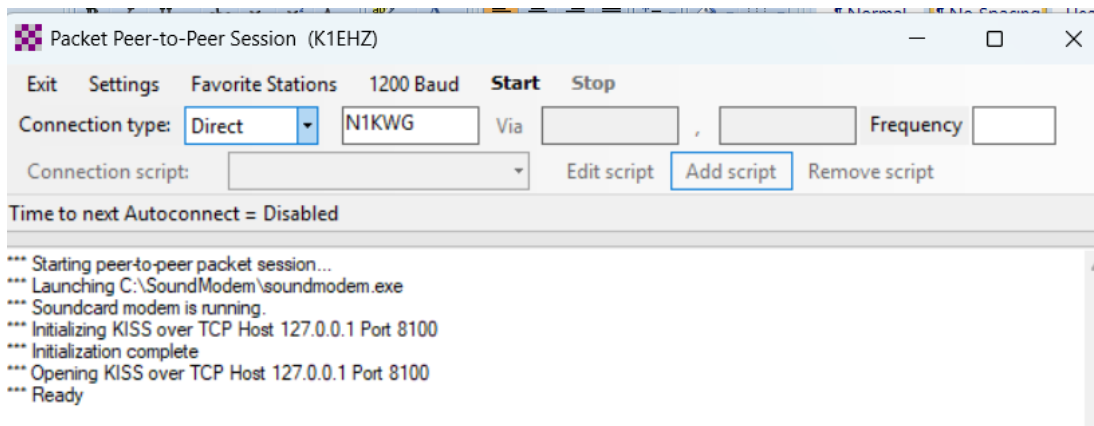
Vara HF Winlink
Vara FM Winlink
Iridium GO Winlink

Packet P2P
Pactor P2P
Robust Packet P2P
Winmor P2P
K1E Ardop P2P
W1E Vara P2P
k1E Vara FM P2P
Telnet P2P

Pactor Radio-only
Winmor Radio-only
Vara Radio-only
Telnet Radio-only

Telnet Post Office

- b. Click Open Session.



- c. In the **Session window** fill in the call sign of the addressee.
 - i. You may send the message to the addressee or have it picked up.
 - ii. Leave the call sign box blank if you expect the addressee(s) to connect to your station to pick up message(s).
4. Click **Start** to connect to the station to send the message, or leave the session open if you expect the other station(s) to connect to your station pick up message(s).
5. Packet P2P messages may be sent through a digipeater like regular Packet Winlink messages.

